

Job: _____
 Engineer: _____
 Contractor: _____
 Prepared By: _____ Date: _____
 Model: _____ Indoor

Raytherm® - Type H

Hydronic Heating Boilers

Models 182-400 - Indoor

EFFICIENT

- ▶ 82% efficiency – highest of any atmospheric boiler available today

THERMAL SHOCK PROOF

- ▶ Twenty-year warranty against thermal shock damage up to 150°F differential
- ▶ Maximum operating temperature: 230°F

LIGHTWEIGHT

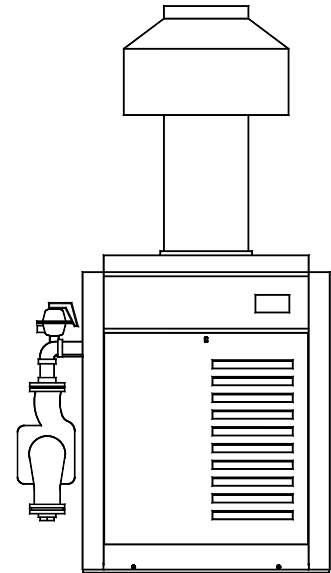
- ▶ A floor load of 70 lbs./sq. ft. or less

HIGH RECOVERY

- ▶ Cuts fuel costs substantially because the standby and radiation losses normal to other boilers and tank-type water heaters are eliminated

LOW WATER OPERATING TEMPERATURE

- ▶ Operates with water temperature as low as 105°F without condensing



Heat Exchanger

- ASME Inspected and Stamped 160 PSIG
- National Board Approved
- Headers
 - Cast Iron Glass-lined – Standard
 - Bronze – Option A-1
- Finned Tubing
 - Copper – Standard
 - Cupro Nickel – Option A-3
- ASME Steel Tube Sheet
- Silicone O-Rings
- ASME Pressure Relief Valve
 - 45 PSIG – Standard
 - _____ PSIG ASME – Optional
- Temperature and Pressure Gauge, Shipped Loose
- Water Connections
 - Left Hand – Standard
 - Right Hand – Option A-6
- Flow Configuration – Two-pass
- Pump – Optional
 - Mounted, 1/8 HP, 120 Volt, 1Ø, 60 Hz

Controls

- 120V, 60Hz, 1 Ph Power Supply
- 120/24V Transformer
- 100% Pilot Shut-off/Lockout
- Electronic, Intermittent Ignition (IID) Pilot
- High Limit Control, Manual Reset
- On/Off Switch
- Flow Switch
- Economaster II Pump Time Delay

Gas Control Train

- Manual Main Gas Shut-off Cock
- Main Gas Pressure Regulator
- Redundant Safety Shut-off Valve
- Control Valve
- Firing Mode
 - On/Off (H4)
 - Two-stage Firing (H3)
 - Mechanical Modulation, 110-170°F (H5)
 - Mechanical Modulation, 150-210°F (H1)
- Fuel
 - Natural Gas
 - Propane Gas
- Design Certified ANSI Z21.13

Construction

- Front Controls
- Stainless Steel Burners
- Polyulf Powder Coat Finish
- Vent Selection
 - Draft Diverter – Option D-10
 - Power Vent, Loose – Option D-2
- Base (Optional)
 - Combustible Floor Shield – Option J-1

Temperature Controls

Note: H1 and H5 do not require a controller

- B-6 Two-stage – 100-200°F
- Y-241 Electronic Sequencer, 1-4 Stages
- Y-281 Electronic Sequencer, 1-8 Stages

Additional Safety Controls

- F-10 Low Water Cut-off Probe
- I-1 High Limit Control, Auto Reset, 240°F
- S-1 Low Gas Pressure Switch, Manual
- S-2 High Gas Pressure Switch, Manual

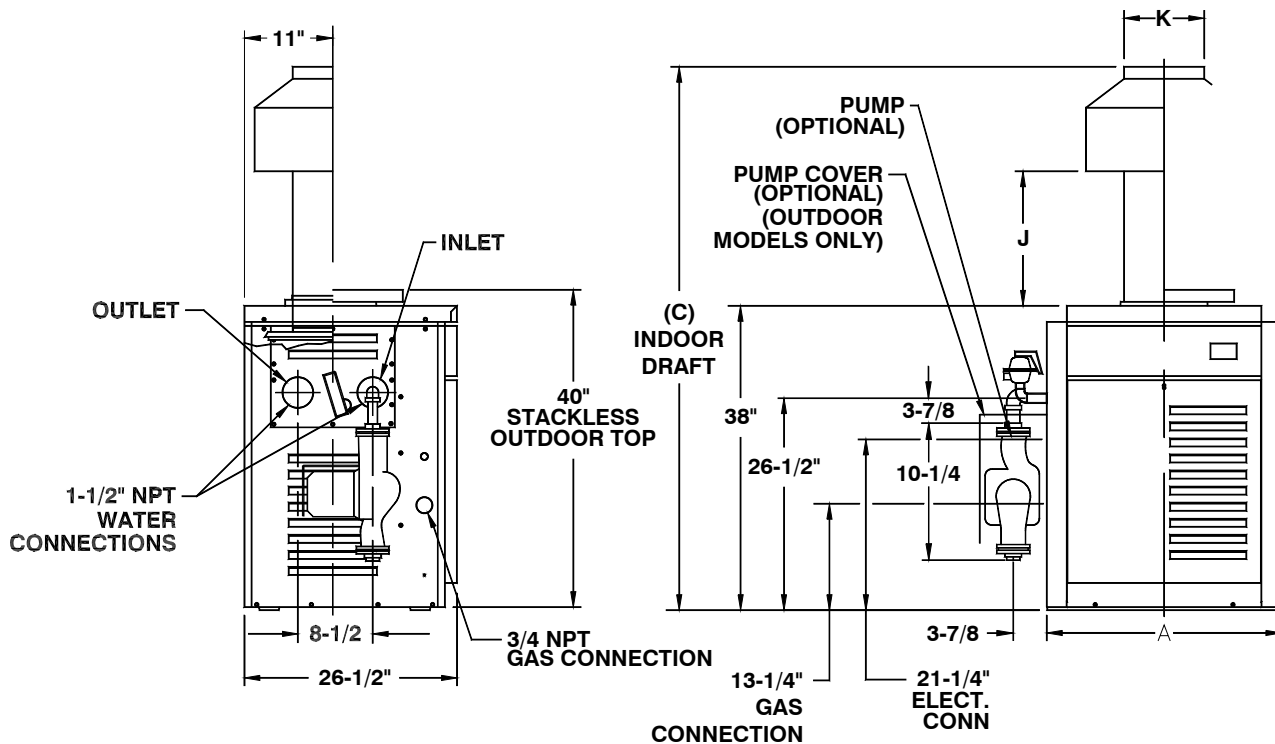
Regulatory Agency Requirements



Raypak®
 A Rheem® Company

Raytherm - Type H Hydronic Heating Boilers - Indoor

Model _____



Model No.	MBTU Input	MBTU Output	AFUE* (%)	Dimensions (Inches)				Shipping Weight (Lbs.) – Approx.	
				Width A	Height C	J	Flue Dia. K	No Pump	w/ Pump
H-182	181	148	82.6	18-1/4	62-5/8	12-1/16	6	191	221
H-260	264	216	82.7	22-3/8	62-7/8	11-1/8	7	214	244
H-330	334	274	N/A	25-3/4	63-3/4	10-3/4	8	234	264
H-400	399	327	N/A	29-1/4	65-3/8	12-1/2	9	253	283

* With Vent Damper

NOTE: Ratings shown are for elevations up to 2,000 feet. For elevations over 2,000, reduce ratings at the rate of 4% for each 1,000 feet above sea level.

BOILER RATE OF FLOW AND PRESSURE DROP

Model No.	10° ΔT		20° ΔT		30° ΔT	
	GPM	ΔP FT	GPM	ΔP FT	GPM	ΔP FT
H-182	30	4.2	N/A	N/A	N/A	N/A
H-260	43	8.5	22	2.2	N/A	N/A
H-330	N/A	N/A	27	3.4	N/A	N/A
H-400	N/A	N/A	33	5.2	22	2.3

N/A – Not Applicable